



Indira National School Parandwadi

**Precautionary measures post
lockdown**

WELCOME





Moving forward with Optimism



Back to School

(Plans for opening of the school post Covid 19 lockdown , the changes if required will be made when we receive the guidelines from the Education department & the government)



At Indira National School Parandwadi



Every child's good health and well being is our first priority and also our responsibility to keep them safe and secure.



Sanitization of the school building



- ▶ Sanitization of the school building will be done regularly as a safety and precautionary measure.



Cleaning of water tank and the coolers

- ▶ Care will be taken on regular basis towards the cleanliness of water tank and the drinking water cooler.



Precautionary measures at entry

1. Thermometer Screening - Temperature check at entrance gate will be done by the guard.
(All staff & Visitors). Guards will be trained for the same.
(Children or staff who have a fever of 100.40 (38.00C) or above or other signs of illness will be sent home immediately.



2. Sanitization arrangement will be done at different places.
 1. Entrance gate.
 2. In the lobby
 3. Near wash rooms.





MASK IS MANDATORY

- ▶ wearing masks will be mandatory for all the students ,staff and the visitors.
- ▶ Visitors will not be allowed to enter the campus without masks.



Social distancing

- ▶ 1. Social distancing will be maintained in the school campus .
- ▶ 2. Seating arrangement for visitors will be done at lobby by keeping 2 meter distance,
- 3.chairs will be arranged accordingly.





SEATING ARRANGEMENT AT LOBBY





Admission enquiry and presentation

1. Power point presentation arrangement at lobby.
2. Document verification to be done only through soft scanned copies.
3. Campus visit for parents allowed only for one person at a time.
4. For a cash dealing (Account department)
Hand gloves is mandatory





Seating arrangement for the students

1. Seating arrangement for all the students-
(Only 1 child on one bench.)
2. The benches will be arranged keeping some distance.
3. Monitoring will be done by the teachers.



SEATING ARRANGEMENTS FOR STAFF

- ▶ Staff members to be seated in their respective classes.
- ▶ Staff can use the staff room during their free period.
- ▶ Staff to be seated maintaining safe distance.

Cleanliness and hygiene instructions for house keeping

- ▶ 1. Workshop for all the staff members, bus, housekeeping for above awareness will be done .
- ▶ 2. Cleanliness and hygiene to be maintained by everyone . Frequently hands to be washed.
- ▶ 3. To increase the frequency of cleaning washroom and school premises on regular basis.
- ▶ 4. A medical room will be kept ready for kids and staff Cleanliness will be maintained.





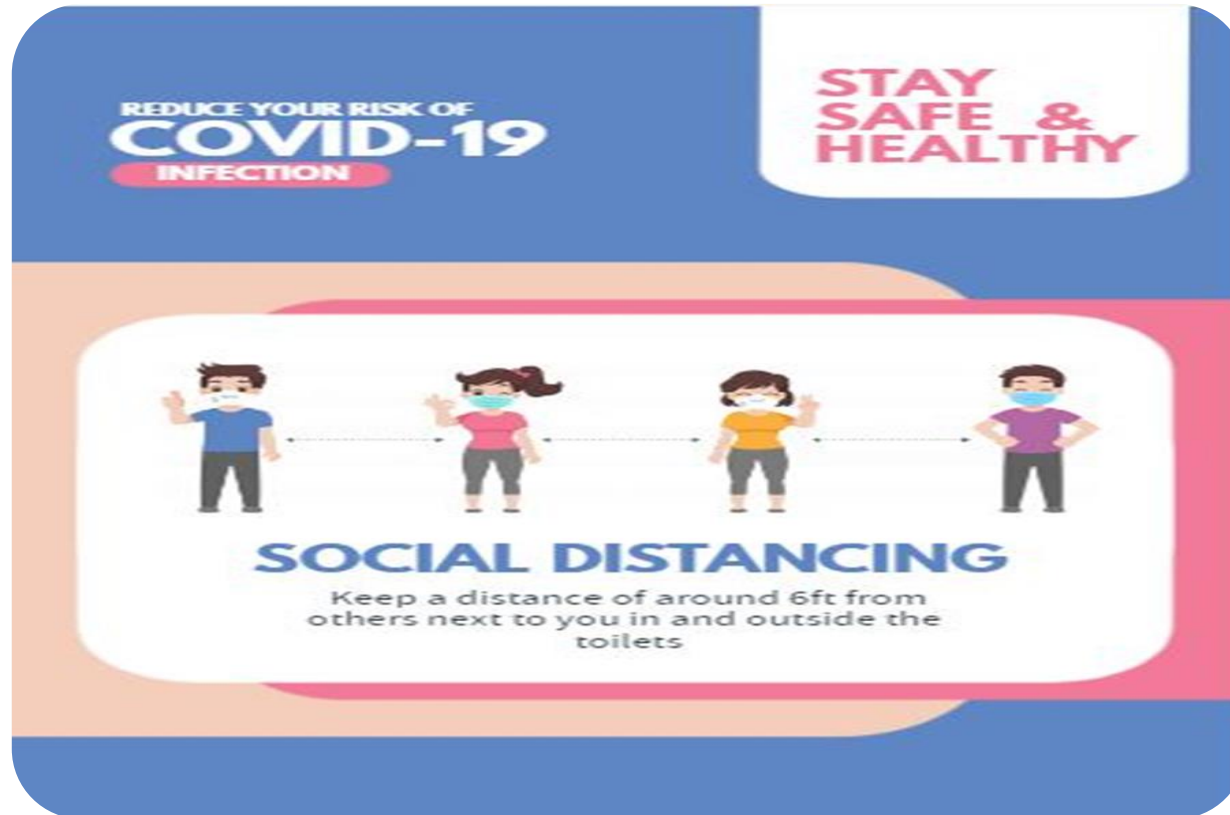
House keeping - Instructions for agency



- ▶ The agency will give them training and awareness
 - ▶ To wear mask and hand gloves mandatorily
 - ▶ To maintain proper social distancing while at work
 - ▶ To wash their hands frequently with soap.
 - ▶ To ensure that there is no overcrowding in any area including toilets, wash-basin, etc.



MAINTAINING SOCIAL DISTANCING NEAR RESTROOMS





Transport

1. The bus driver and support staff will be advised to disinfect and sanitize the vehicle on regular basis.
2. To ensure that all children and staff of the bus are wearing masks at all times and plan a well spaced seating arrangement.
3. One child in one seat
4. To check temperature of the child before picking up the child.



Transport

1. Bus attendant and driver to be instructed to maintain hygiene, hand washing and social distancing rules.
2. To ensure that there is a hand sanitizer available at all times in the bus.
3. Make children use it as and when necessary.
4. Medical certificate to be collected for bus moushi and drivers.
5. The buses will be parked in the school premises and the students will be directed.





TRANSPORT - SOCIAL DISTANCING IN THE BUS



- ▶ Norms for social distancing to be followed by the students in the **SCHOOL BUS** during travel to and fro to school.
- ▶ Bus moushi will be instructed to look into the same.
- ▶ Alternate seating arrangements of students to be done to maintain social distancing



PREVENTIVE MEASURE INSTRUCTIONS FOR ALL

PREVENTION OF COVID-19



ALCOHOL GEL
Lorem ipsum dolor sit amet, consectetur adipiscing elit, sed

FACE MASK
Lorem ipsum dolor sit amet, consectetur adipiscing elit, sed diam

WASHING HANDS
Lorem ipsum dolor sit amet, consectetur adipiscing elit, sed diam

SOCIAL DISTANCING
Lorem ipsum dolor sit amet, consectetur adipiscing elit, sed diam nonum-

FACE SHIELD MASK



PVT - Pick up drop procedures for parents.

- ▶ Pick up and drop - During rainy season the arrangement will be done in the parking keeping in mind social distancing.
- ▶ Monitoring will be done by the Security at the entrance, Principal, admin staff and teachers - in the parking.
- ▶ Distance maintaining will be taken care.
- ▶ Markings will be done for the child and parent accordingly.



Support from Teachers and Parents

Teachers and Parents should make the kids aware about the following.

a. Hygiene habits during coughing and sneezing

b. Hand washing

c. Social distancing

d. Wearing a mask

e. To talk positively about the school experience and not scare the kids with too many do's and don'ts.

g. The child should carry the sanitizer.





INSTRUCTIONS TO THE PARENTS



- a. If the child is unwell, the parents to note it seriously and avoid sending the child to the school.
- b. Any health history of a child the parent should inform the school authority.



Instructions for the employees



- 1 If any staff is unwell, then the staff will have to produce fitness certificate at the time of joining.
- 2 Self declaration forms - medical fitness of every employee teaching staff, non teaching staff , house keeping, transport staff to be submitted in the school office.



Instructions to the teachers

1. Instructions will be given to all the teachers to maintain social distancing in the school.
2. All the classes will have different time for the students to use washrooms rather than following with the common break/recess timings.
3. At any point of time, the child is noticed by the teacher that he/she is unwell, immediately to be informed to the Principal and parents as well.



LETS WORK TOGETHER



Coming together
is a beginning;
keeping together
is progress;
working together
is success.

Henry Ford

prof. vikas [Studio]RU



Thank you !